



lesen

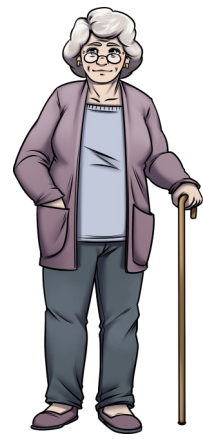
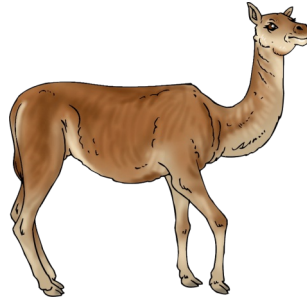
denken



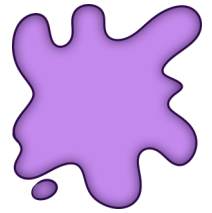
verstehen

Teil 1

AEIOUMLTRSW

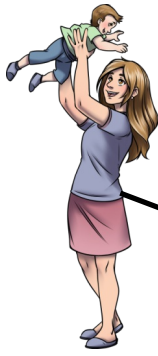


G	R	R	L	L	B	G	J	B	Q
Q	A	V	Q	B	L	O	Q	L	B
M	X	K	V	A	A	M	V	I	L
U	U	C	P	M	M	A	V	L	I
L	J	N	I	J	A	Q	L	A	M
I	Q	L	M	Z	B	D	B	Z	O
F	W	K	S	X	W	C	L	M	U
R	Y	Q	G	W	M	A	M	A	A
V	T	R	D	B	Y	V	Z	Y	J
W	E	F	B	M	I	M	I	M	W



Diese Wörter findest du im  
Suchsel: IM, MAMA, OMA, MIMI,  
AM, LAMA, LIMO, LILA, MULI





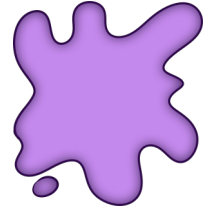
Oma



Lama

Mimi

Mama



lila



Limo

Male Mama !

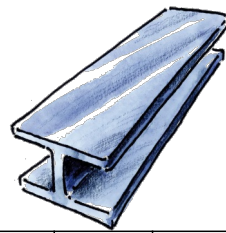
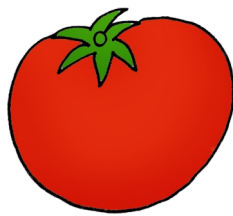
Male Oma !

Male Mimi !

Male Lama !

Male lila !

Male Limo!



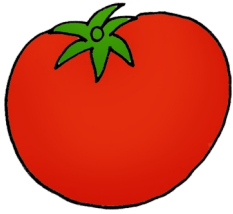
G	T	O	G	G	S	D	U	L	M	K	O
O	P	M	G	I	M	V	M	I	T	Z	X
J	Y	G	P	B	M	A	L	E	F	P	C
S	R	W	F	V	Z	T	O	M	A	T	E
P	J	L	F	L	O	L	L	I	B	Q	K
U	V	T	E	S	Z	K	P	U	J	U	S
B	E	O	M	T	H	G	L	F	T	E	E
Q	M	L	Z	K	Q	O	H	X	W	S	R
S	U	L	Y	Q	T	A	L	X	W	Q	C
S	B	F	B	W	D	A	L	T	K	F	T
Q	S	B	F	H	U	L	D	J	X	C	L
K	Y	Y	M	E	T	A	L	L	M	I	V

Diese Wörter findest du im Suchsel:

MALE, EMU, LOLLI, TEE, TOMATE,

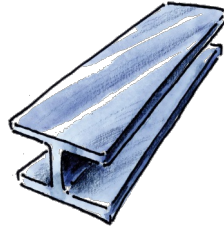
METALL, TOLL, ALT, MIT, TAL





male

Emu



Tomate

Lolli



Metall



alt



Tee



Male Lolli !

Male alt !

Male Emu !

Male Metall !

Male Tee !

Male Tomate!

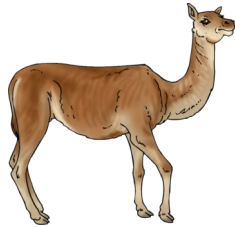


- Mimi
- Mama
- Momo

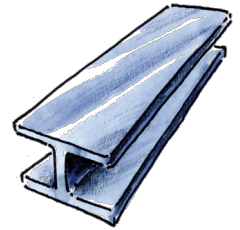


- Tal
- alt
- mit

- Lama
- Lolli
- Limo



- Metall
- Momo
- Tal



- Omo
- Oma
- Momo



- Tom
- Tee
- Tim

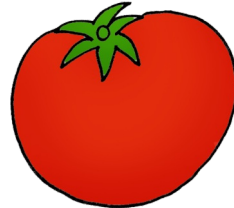
- lila
- lolo
- lula



- Emma
- Ella
- Emu



- Mama
- Momo
- Mimi



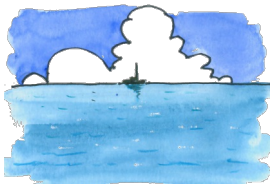
- Tee
- Toto
- Tomato

- Lama
- Lolli
- Limo



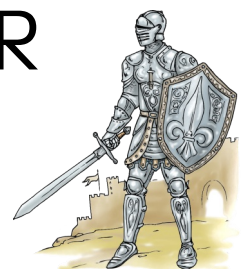
- Lama
- Lolli
- Limo

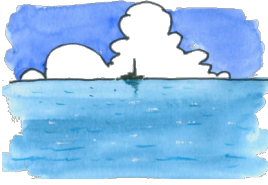




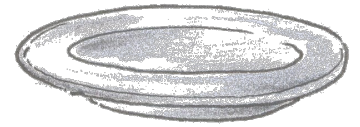
L	M	I	R	X	B	T	J	P	X	X	O
L	J	P	P	M	M	U	T	T	E	R	X
K	D	Y	K	G	E	R	X	T	T	O	R
T	E	K	J	E	E	M	Q	M	K	C	X
O	O	H	P	B	R	Q	R	O	T	Y	R
R	R	B	X	Q	V	R	A	T	T	E	R
T	O	M	I	M	M	E	R	N	X	B	C
E	L	W	M	O	T	O	R	Y	K	X	Q
D	L	V	Y	O	B	X	N	U	I	B	B
J	E	W	X	T	E	L	L	E	R	P	K
K	R	Q	R	Y	X	M	E	T	E	R	I
U	Z	X	T	R	I	T	T	E	R	V	E

Diese Wörter findest du im Suchsel:  
MEER, METER, MIR, MOTOR, ROT,  
TOR, TORTE, TURM, RATTE, ROLLER,  
TELLER, RITTER, IMMER, MUTTER





Motor



rot



Roller

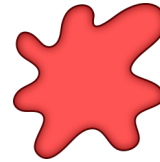


Teller



Meer

Ratte



Torte

Murmel



Turm



Ritter



Male Ratte !

Male Teller !

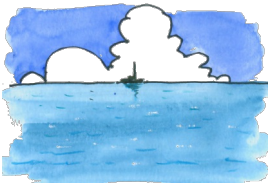
Male Turm !

Male Murmel !

Male Torte !

Male rot!





- Meer
- Momo
- Mimi



- Torte
- Tor
- Tom

- Motor
- Tor
- Ratte



- Ritter
- Ratte
- Roller



- Ratte
- rot
- Rom

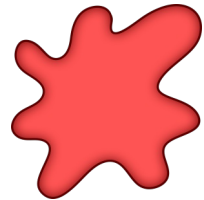


- Murrel
- Mutter
- Momo

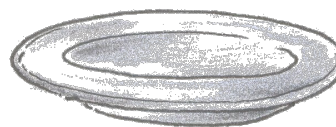
- Ratte
- Roller
- Rollo



- Tor
- rot
- Torte



- Turm
- Tee
- Tor



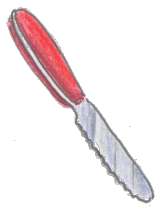
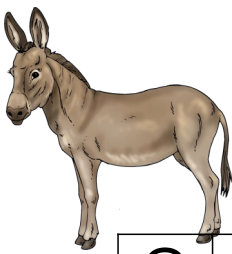
- Teller
- Torte
- Tee

- Mama
- Mutter
- Momi



- leer
- rot
- mit





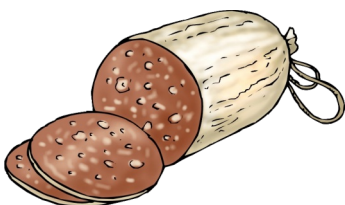
S	A	L	A	T	D	U	L	M	K	O	O
P	M	S	A	L	A	M	I	G	I	M	T
V	D	X	J	Y	E	S	E	L	G	P	A
B	E	P	C	S	R	R	O	S	E	W	S
M	O	O	S	Z	V	Z	P	J	O	F	S
B	Q	K	U	O	E	S	Z	K	P	M	E
M	U	S	S	U	M	J	W	S	B	U	M
T	S	O	M	M	E	R	H	G	L	S	F
Q	B	S	E	S	S	E	L	K	Q	E	O
H	X	L	R	O	S	A	L	R	S	U	Y
Q	X	O	S	E	E	U	C	S	B	M	F
B	W	D	K	F	R	T	Q	S	B	F	H

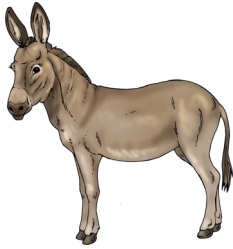
Diese Wörter findest du im Suchsel:

ESEL, MESSER, MOOS, MUSS, ROSE,

ROSA, MUSEUM, SALAT, SALAMI,

SEE, SOMMER, SESSEL, TASSE





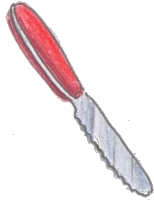
Messer



Salat



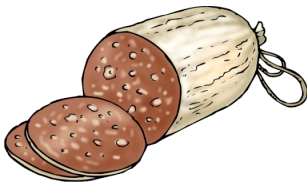
Sessel



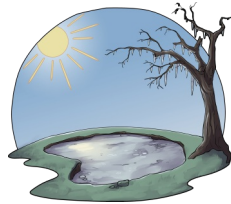
Salami



See



Tasse



Salat



Esel



rosa

Rose

Male Esel !

Male lila Sessel!

Male Tasse !

Male Salat !

Male rote Rose !

Male Salami mit  
Tomate!

# Welcher Satz gehört zu welchem Bild?



1. Er isst Salami.

2. Er isst Tomate.

3. Er isst Salat.

4. Er ist im See.

5. Er isst mit Messer.

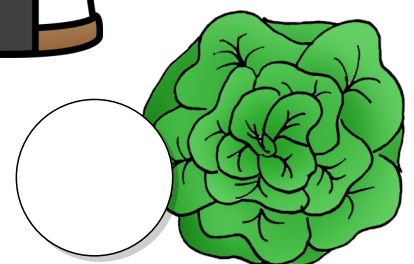
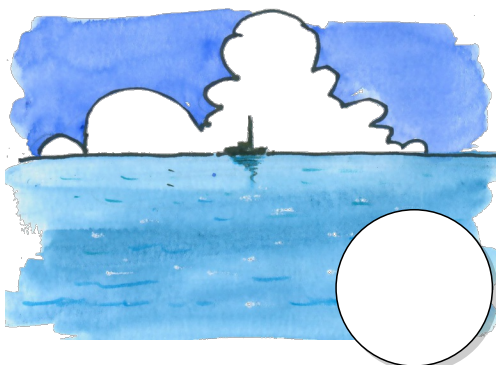
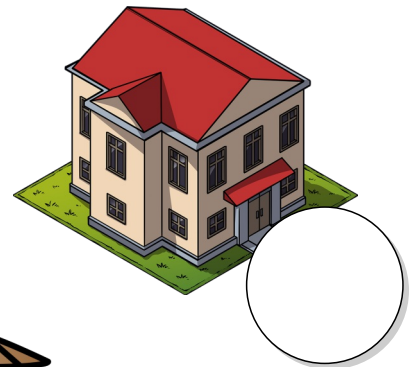
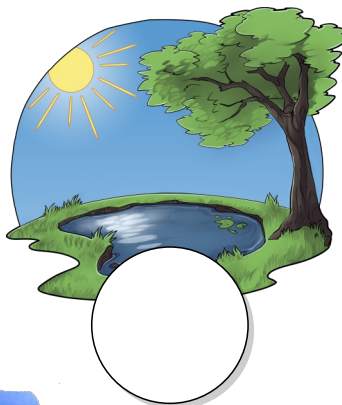
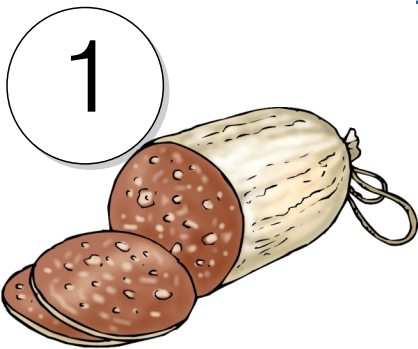
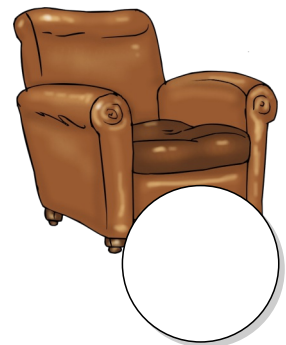
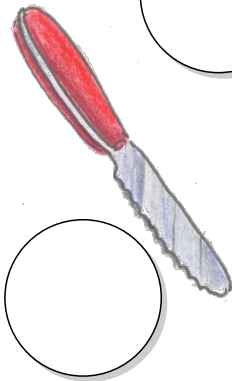
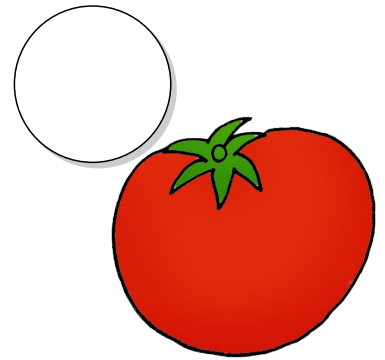
6. Er ist im Meer.

7. Er ist im Sessel.

8. Er ist im Museum.

9. Er ist am Roller.

10. Er ist im Turm.





O esse

O es

O so



O Sissi

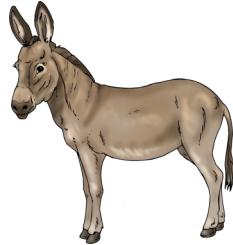
O Sessel

O Sommer

O Emu

O Emma

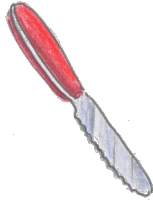
O Esel



O Salami

O Sommer

O Salat



O Moos

O Messer

O Meer



O Museum

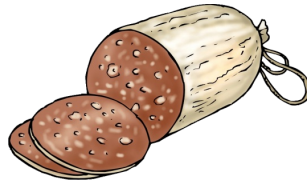
O Meer

O See

O Salami

O Salat

O See



O rot

O rosa

O lila



O See

O Sommer

O Tasse



O Teller

O Tasse

O Torte

O Tasse

O Rose

O rosa

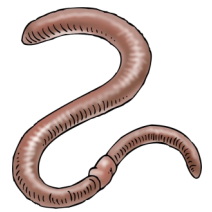
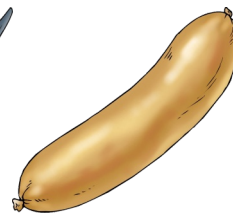
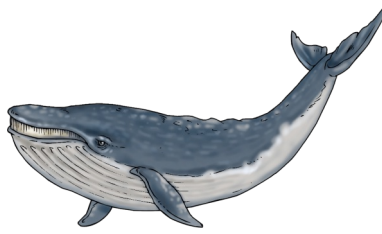
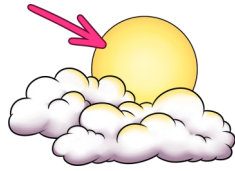


O Museum

O Moos

O Motor





D	U	L	M	K	O	O	P	M	G	I	M
W	A	R	M	V	W	A	N	N	E	Z	X
J	Y	G	P	B	E	P	W	A	R	U	M
C	S	R	W	K	E	V	W	O	L	L	E
M	P	J	Y	X	T	B	W	U	R	M	Q
K	I	Y	E	S	W	Z	K	P	U	J	W
S	B	V	T	H	A	G	L	F	W	Q	W
B	W	A	L	K	S	Q	O	H	E	X	I
W	E	L	L	E	W	L	R	S	T	Y	R
Q	W	U	R	S	T	X	F	T	T	C	S
W	A	S	S	E	R	B	F	B	E	W	D
K	F	W	E	L	T	T	Q	S	R	B	F

Diese Wörter findest du im Suchsel:

WAL, ETWAS, WARM, WARUM,

WASSER, WELLE, WETTER, WURM,

WURST, WOLLE, WANNE, WELT, WIR

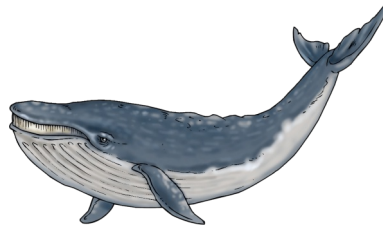




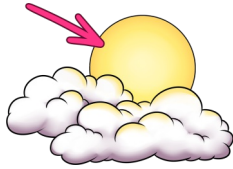
Wurm



warm



wir



Wasser

Wurst



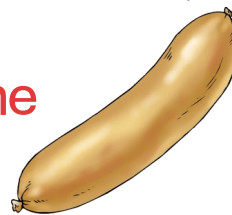
Wal



Welle



Wanne



Welt

Wetter

Male Wurst !

Male Wanne !

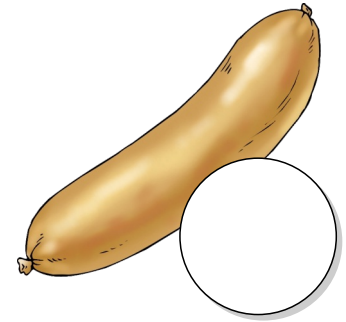
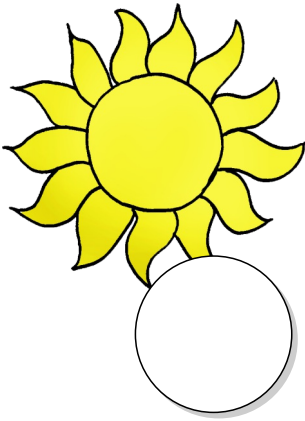
Male warmes Wetter !

Male Wurm !

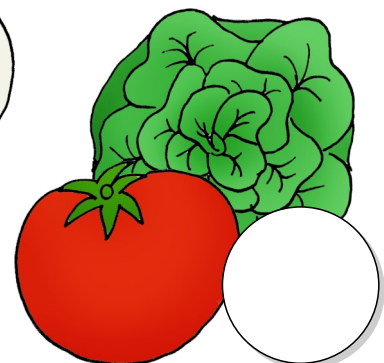
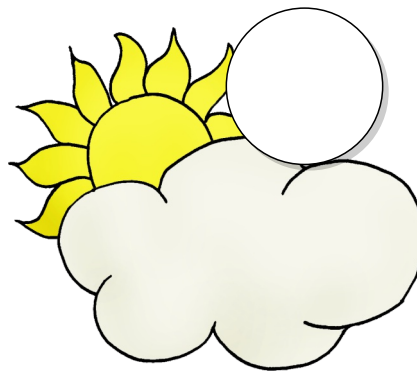
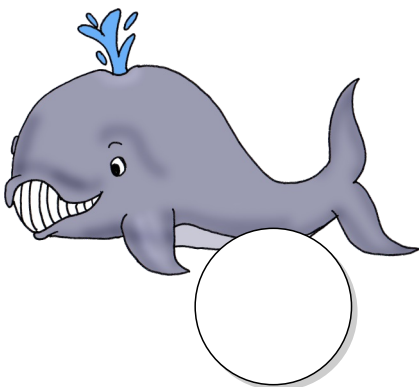
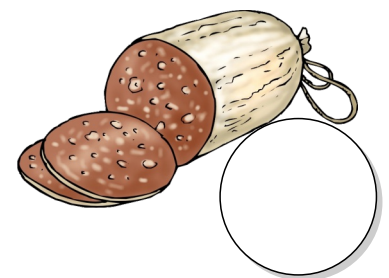
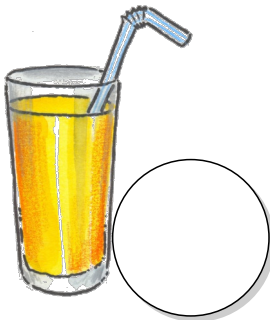
Male Wasser mit  
Wellen !

Male Wal im  
Wasser!

# Welcher Satz gehört zu welchem Bild?



1. Er ist im Wasser.
2. Er isst Wurst.
3. Er will Salami.
4. Er will warmes Wetter.
5. Er will Limo.
6. Er will Wal im Meer.
7. Er will tolles Wetter.
8. Er will warmes Wasser im Tee.
9. Er will Salat mit Tomate.
10. Er will Torte im Teller.





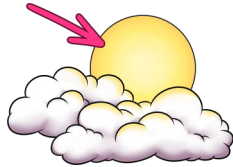


- was
- Wasser
- Wurst



- war
- warum
- warm

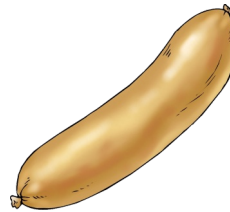
- wo
- Wetter
- Welle



- wer
- wir
- wo

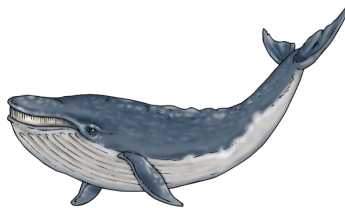


- Wurst
- Wurm
- Wanne



- Wurm
- Wort
- Wurst

- was
- wann
- Wal



- Wanne
- Wal
- Wasser



- Welle
- Wetter
- Welt

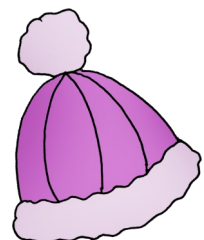


- Welle
- Wette
- Wasser

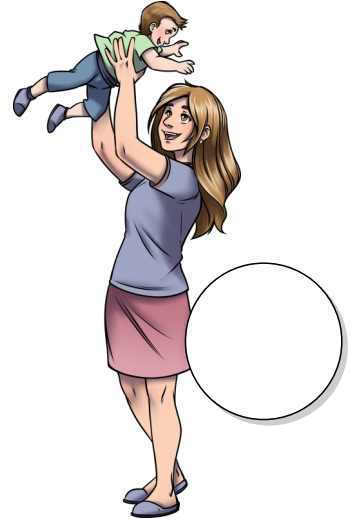
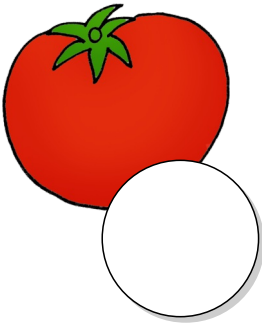
- was
- warm
- wo



- wo
- Wolle
- warum



# Viele Fragen



1. Wo ist **Mama** ?
2. Was isst **Oma**?
3. Wer will **Wasser**?
4. Wo malt **Otto**?
5. Wer will **lila** Tee?
6. Was will **Esel Emma**?
7. Wer will **Wolle**?
8. Wer will **rote** **Tomate**?
9. Wer will **Salat** mit **Salami**?
10. Wo ist **Wurm Wilma**?

