

na

an

ne

en

ni

in

no

on

nu

un

an

na

en

ne

in

ni

on

no

un

nu

na

an

ne

en

ni

in

no

on

nu

un

nur

Land

den

Laterne

Ananas

lernen

Antenne

lesen

Donner

Lineal

Ende

malen

Ente

Mann

Laden

Mantel

Minute

Note

Monat

Nest

Monster

Nummer

Mond

Nuss

Nase

Sand

Mund

Sonne

Nudel

Tanne

nass

Tante

Tonne

Wanne

Winter

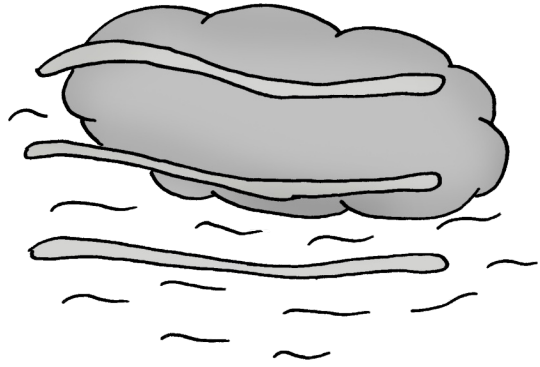
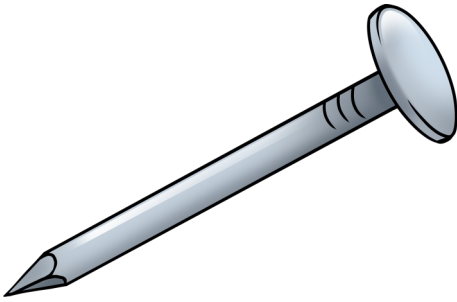
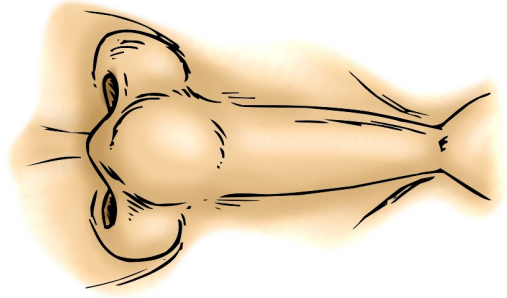
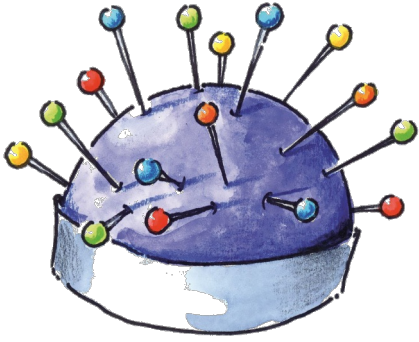
Wind

Domino

Indianer

Melone

Dino



Nacht

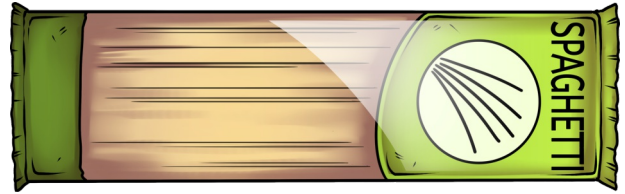
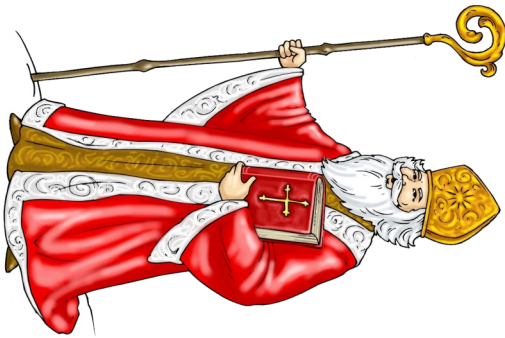
Nashorn

Nadel

Nase

Nagel

Nebel



Nest

Nilpferd

Nuss

Noten

Nikolaus

Nudeln